

Northwest Association for Biomedical Research

Promoting an Understanding of Biomedical Research and its Ethical Conduct

RESPONSIVE COMMUNICATION
PARTNERSHIPS **TEACHERS**
COMMUNITY WORKSHOPS HANDS-ON SCIENCE
NETWORKING **NWABR** ACCESSIBLE
PROMOTING TRUST **DIALOGUE**
STUDENTS **INCLUSIVE** EMERGING
BIOETHICS CONFERENCES

2012 HIGHLIGHTS

» CONVENED TWO MAJOR REGIONAL CONFERENCES

for both the IRB and IACUC committees to ensure that administrators and researchers are prepared to address the most current regulatory and bioethics issues.

» ORGANIZED MONTHLY COMMUNITY CONVERSATIONS

about ethical dilemmas in medical research, covering topics such as the justification for animal research, understanding tradeoffs when returning research results to participants, and how/if research should be conducted with children.

» PUBLISHED FINDINGS AND ARTICLES IN PEER-REVIEWED JOURNALS

to support excellence in science. "Fostering Critical Thinking, Reasoning, and Argumentation Skills through Bioethics Education," in *Public Library of Science (PLOS) ONE* (May 2012) has been viewed more than 3,000 times.

» CELEBRATED THE 12TH ANNUAL STUDENT BIO EXPO

by showcasing work from 361 students representing 28 Washington high schools. Students were connected with mentors and judges from 59 institutions in our local scientific community.

» FACILITATED NETWORKING AND COMMUNITY BUILDING

among immunology researchers by organizing the first Northwest Summit on Immunological Models in Non-Human Primates, an invitation-only conference on new technologies and translational insights with non-human primate models.

» COORDINATED A SPECIAL SCREENING OF THE FILM, "RARE,"

in collaboration with the Seattle Science Festival and Pacific Science Center's 50th anniversary. The film highlights the challenges of living with a rare genetic disorder, and the need for research and clinical trial participation.

» ENGAGED 156 SCIENTISTS AND STAFF FROM MEMBER INSTITUTIONS

and provided 17 site visits for teachers and students participating in NWABR's NIH-funded CURE summer programs.

» RECRUITED MORE THAN 280 SCIENTISTS FROM 22 INSTITUTIONS

at the 6th annual Life Sciences Research Weekend to present interactive programs for children and adults—making science accessible and scientists inspiring!

» EXTENDED THE REACH OF NWABR'S NSF-FUNDED BIO-ITEST BIOINFORMATICS PROGRAM

through additional summer workshops for teachers and students, submission of research findings for publication, and a new workshop partnership with Shoreline Community College.

» INTRODUCED MORE THAN 200 MIDDLE SCHOOL STUDENTS

to the process of drug and medical device development through NWABR's annual "Biomedical Breakthroughs and My Life" essay contest, where every student receives personal feedback from a researcher.

» INSPIRED THE NEXT GENERATION OF SCIENTISTS through after school and in-class, hands-on lotion and soap workshops that reached 276 students and 76 adults.

Current NWABR Staff

SUSAN ADLER; Executive Director

JEANNE TING CHOWNING, MS; Director of Education

JOAN GRISWOLD, MIT; Curriculum Design Lead

ANNE HAINSWORTH; Executive Assistant

DINA KOVARIK, MS, PHD; Program Manager, Bioinformatics

VISA MARONG; Operations Manager

JENNIFER PANG, PHD; Program Manager, Student Bio Expo

REITHA WEEKS, PHD; Program Manager, Science Outreach

JENNIFER WROBLEWSKI, MPH; Program Manager, Public Engagement

NWABR.ORG

100 W Harrison, N Tower, Suite 430, Seattle, Wa 98119
Phone: 206-957-3337 Fax: 206-282-2214

NWABR is an exempt organization under
Section 501(c)(3) of the Internal Revenue Code.

Organizational Members

HEALTH-RELATED CORPORATIONS

Amgen
Bristol-Myers Squibb
Emergent Product Development
Novo Nordisk
Pacific Northwest National Laboratory
PhaseRx Inc.
SNBL USA, Ltd.

EDUCATIONAL & RESEARCH INSTITUTIONS

University of Idaho
Oregon Health & Science University
Oregon State University
University of Oregon
University of Idaho
University of Washington
Washington State University
Western Washington University

NON-PROFIT RESEARCH INSTITUTIONS

Allen Institute for Brain Science
Fred Hutchinson Cancer Research Center
Infectious Disease Research Institute
Institute for Systems Biology
Pacific Northwest Diabetes Research Institute
PATH
Puget Sound Blood Center
Seattle Biomedical Research Institute
Seattle Children's Research Institute
The Hope Heart Institute

RESEARCH HOSPITALS

St. Luke's Health System
Legacy Health System
Samaritan Health Services
Benaroya Research Institute at Virginia Mason
Southwest Washington Medical Center
Swedish Medical Center
Veterans Affairs Puget Sound Health Care System

Associate Members

VOLUNTARY HEALTH ORGANIZATIONS

Northwest Kidney Centers

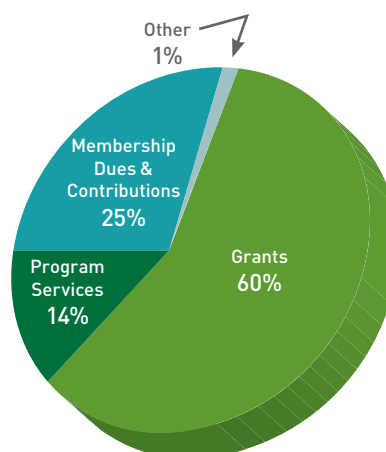
PROFESSIONAL SOCIETIES & ASSOCIATIONS

American Physiological Society
Washington Biotechnology & Biomedical Association
Washington Global Health Alliance
Washington State Dental Association
Washington State Medical Association
Washington State Veterinary Medical Association

SERVICE PROVIDERS

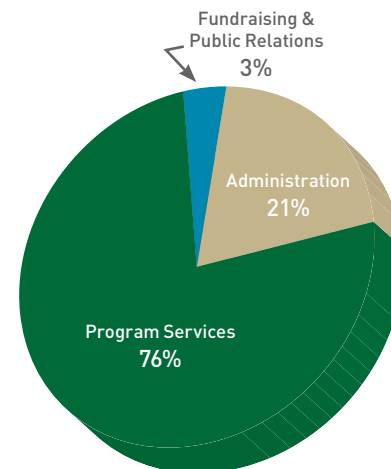
Alexandria Real Estate Equities, Inc.
Allentown, Inc.
Lucent Medical Systems
NBBJ
Purina Mills Lab Diet/Land O' Lakes Purina Feed
Quorum Review
The Windward Company
University Mechanical Contractors, Inc.
Western Institutional Review Board

FINANCIALS



REVENUE: \$1,201,208

Fund balance as of 9/30/12



EXPENSES: \$1,282,481

2012 Executive Committee

JUDY FENYK-MELODY, DVM, DACLAM, President; Director, Preclinical, Amgen

TED POSTON, MSC, Vice President; Senior Research Scientist, Pacific Northwest National Laboratory (Retired)

CHERYL WEAVER, BA, CCRC, CCRA, Vice President; Administrative Director, Clinical Research Program, Benaroya Research Institute at Virginia Mason

BOB ENNES, Treasurer; Chair, Finance Committee; Director, Health Sciences Academic Services & Facilities, and Interim Director, Finance & Administration, Health Sciences Administration, University of Washington

CAMI GEARHART, JD, Secretary; CEO, Quorum Review, Inc.

LYNN ROSE, PHD, Immediate Past President; Director of Science Administration, Benaroya Research Institute at Virginia Mason

SUSAN ADLER, Executive Director; Northwest Association for Biomedical Research (NWABR)

2012 Board of Directors

WILLIAM DALE, PHD; Research Integrity Officer, Oregon Health and Science University

WILLIAM S. DERNELL, DVM, MS, DIPLOMATE ACVS; Professor and Chair, Department of Veterinary Clinical Sciences, Washington State University

KELLY EDWARDS, PHD; Associate Professor, Bioethics & Humanities, Director, Community Engagement and Ethics Core, Center for Ecogenetics and Environmental Health, University of Washington

ANSON FATLAND, PHD; Associate Vice President, Economic Development and External Affairs, Washington State University

LINDA GAINER, Vice President, External Relations and Communications, Fred Hutchinson Cancer Research Center

JENNIFER HANSBERRY, RN, BSN; Administrative Director, Swedish Research Center

TINA MANKOWSKI, Associate Vice President for Medical Affairs, University of Washington

ROYCE MORRISON, MD, CPI; Chief Medical Officer, Comprehensive Clinical Development Northwest

TODD MYERS, Principal, Todd Myers Communications

DANA RILEY BLACK, MED, PHD; Center for Inquiry Science Director, Institute for Systems Biology

STEPHEN ROSENFELD, MD, MBA; IRB Board Chair, Quorum Review, Inc.

LEE SCHOENTRUP, Director of Communications, Infectious Disease Research Institute (IDRI)

CHARLOTTE SHUPERT, PHD, CIP; Domain Analyst, Compliance, Evisions, Inc.

JOHN SLATTERY, PHD; Vice Dean, Office of Research and Graduate Education, School of Medicine, University of Washington

BENJAMIN WILFOND, MD; Director, Treuman Katz Center for Pediatric Bioethics, Seattle Children's Research Institute, Professor, Division of Bioethics and Department of Pediatrics, University of Washington School of Medicine

TEACHERS



NWABR is dedicated to helping teachers improve their classroom experiences and offers an extensive lesson archive including full plans, rubrics, and guidelines, as well as a variety of professional development programs to promote understanding of biomedical research and its ethical conduct.

"NWABR provides fantastic, interactive lesson plans and curricula that address innovative science and grapple with bioethics. During the summer program it was such a privilege to meet science researchers doing cutting-edge experiments in stem cells, cancer, HIV, immunology and other areas of the curriculum that I teach."

-Teacher who attended NWABR's 2012 CURE professional development workshop

MEMBERS



NWABR's local and regional conferences are designed to respond to emerging member needs. We bring members together to advance knowledge, promote networking and strengthen trust in research.

"The conference was well-organized and full of current information...thought-provoking and enjoyable. Most conferences do not stress networking. I found that to be one of the highlights of this meeting."

-Attendee of the Northwest Summit on Immunological Models in Non-Human Primates

COMMUNITY



NWABR programs bring the excitement of science and the promise of research to the non-science community through events such as Life Sciences Research Weekend, Community Conversations, and afterschool science workshops. We encourage dialogue within our community in order to promote the understanding of the process of research.

"Wow—your Life Sciences Research Weekend was incredible! My niece, nephew, hair dresser (seriously), family and friends all came. You wouldn't believe the e-mails I received afterward, all saying what an inspired time they had...My only regret is not having been involved years ago."

-Volunteer at 2012 Life Sciences Research Weekend

RESEARCHERS



Researchers from NWABR's member institutions are invited to share their passion for their work by serving as judges, mentors, speakers or tour guides in their laboratories. They serve as role models to the next generation of scientists.

"It is great to hear that the essay contest is back! Even though I have since moved on from UW [University of Washington] to a postdoc position at Cornell, I was wondering if I could again be a judge of the essays. It is always fascinating to read about the different topics the students write on, to hear their personal stories about how the biomedical issues have affected their lives, and to think about how best to give constructive feedback to them."

-Scientist who served as a judge for the 2012 "Biomedical Breakthroughs and My Life" essay contest

STUDENTS



NWABR connects hundreds of students and researchers each year through programs such as our Student Bio Expo, CURE Student Fellows, Youth Ethics Summit, Speakers Bureau and middle school essay contest.

"I owe you a huge 'Thank You.' Since participating in the [Student Bio Expo], my daughter's interest in science blossomed. I see a different child—one who is eager to learn, hardly watches TV shows anymore and reads *Scientific American* in her free time. Her face lights up when she gets a chance to talk to scientists. I am deeply indebted to the NWABR community and the difference it is making in my child's life. It truly takes a village to raise a child."

-Parent of a 2012 Student Bio Expo participant

NWABR

Northwest Association for Biomedical Research

100 W Harrison, N Tower, Suite 430 | Seattle, WA 98119

PHONE: 206-957-3337 | FAX: 206-282-2214

NWABR is an exempt organization under Section 501(c)(3) of the Internal Revenue Code.